



What should I already know?	Cortonwood then and now
<ul style="list-style-type: none"> I can use a map to investigate where explorers have travelled from and to. I can identify hot and cold areas of the world in relation to the Equator and the North and South poles I know how to use an infant atlas to locate places I can use simple compass points and directional language to describe places on a map. 	<ul style="list-style-type: none"> I will be able to use maps, aerial photographs and satellite images to compare how Corton wood has changed over time. I will be able to discuss and explain how the land has changed over time and what impact this may have had on different groups of people within the community I will understand human geography, including different settlements and land use. I will know how trade links were made in my local area and how coal was mined, moved and distributed. I will be able to read a map and use the 8 compass directions to describe locations. I will be able to follow a route on a simple map I will be able to draw a detailed map and add symbols and a key. I can use a 4-figure grid reference to give direction I will use fieldwork to observe, measure, record and present the human and physical features in my local area.

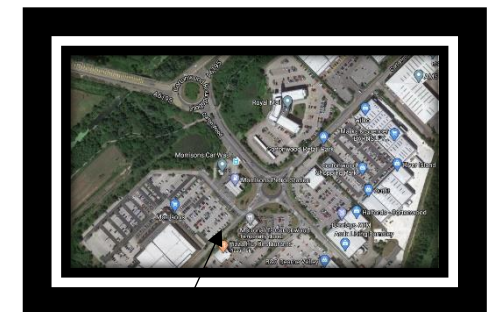
Cortonwood Retail park



Aerial view of Cortonwood



How trade and coal was moved and distributed using rail and canals



Satellite view of Cortonwood

